

Introduction:

At ROC College, we are committed to creating and sustaining a safe, respectful, and inclusive environment for all students. This Anti-Bullying Strategy outlines our proactive approach to preventing bullying and responding effectively when it occurs, fostering a positive, supportive atmosphere across the college community.

Purpose:

1. Define bullying and its impact on individuals and the community.
2. Outline clear and effective methods for reporting and addressing bullying.
3. Cultivate a culture of mutual respect, inclusivity, and kindness throughout the college.
4. Promote student well-being through prevention, education, and support.

Defining Bullying:

Bullying is intentional behaviour designed to harm or intimidate others. It can manifest in various forms, including:

- Physical bullying: Hitting, pushing, or other physical aggression.
- Verbal bullying: Name-calling, insults, or harmful language.
- Social bullying: Exclusion, isolation, or spreading rumours.
- Cyberbullying: Harassment, threats, or inappropriate behaviour online.

Prevention Strategies:

Our approach to prevention focuses on promoting respect and inclusivity through education and proactive engagement.

Curriculum Integration: We integrate anti-bullying themes and social-emotional learning (SEL) into subjects to raise awareness and build empathy.

Inclusive Activities: Regular extracurricular events, teamwork-building activities foster inclusivity and collaboration among students.

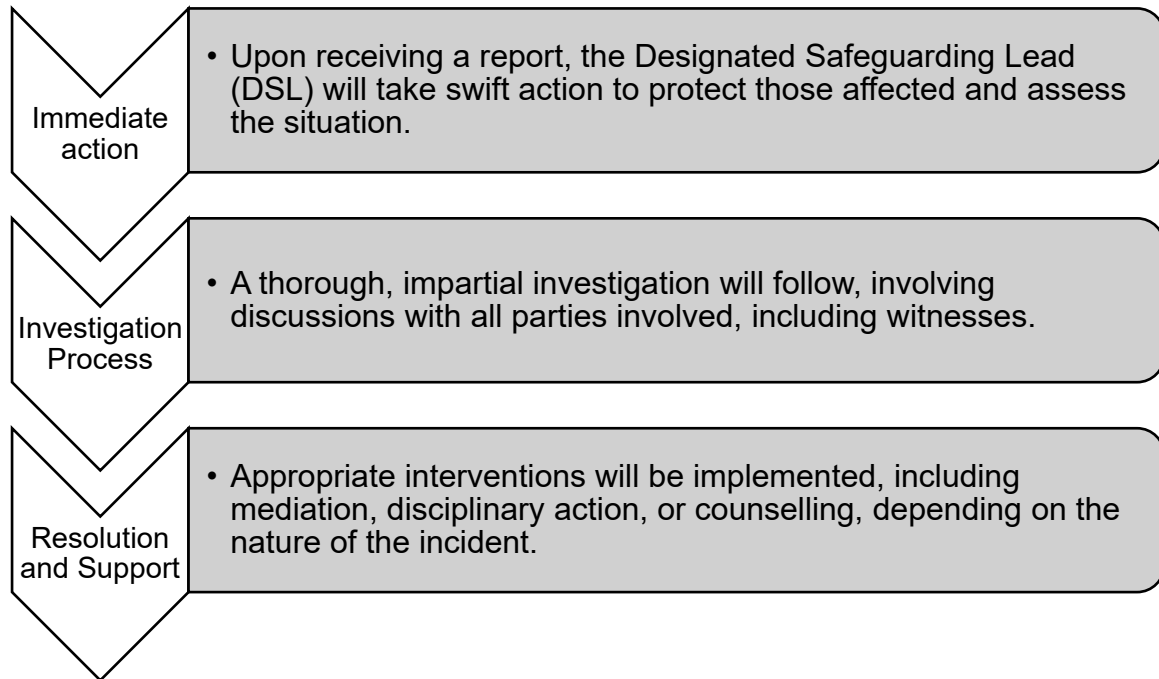
Clear Codes of Conduct: We ensure that all students understand behavioural expectations and consequences through accessible, student-friendly guidelines.

Training and Awareness: We educate students and staff on responsible behaviour, conflict resolution, and the importance of inclusivity. This includes targeted cyberbullying education.

Restorative Practices: We provide students with opportunities for restorative discussions to reflect on actions and repair relationships.

Response Strategies:

Our response strategy ensures quick, fair, and thoughtful action when bullying occurs, prioritising safety and the well-being of all involved.



Support Structures:

We are dedicated to providing both preventative and responsive support to all members of our community.

Counselling Services

Students who are affected by bullying, whether as victims or perpetrators, can access professional support to address emotional and psychological needs.

External Partnerships

We collaborate with external agencies and specialists to provide additional resources and support tailored to individual needs as required.

Review and Evaluation:

Our Anti-Bullying Strategy will be regularly reviewed and updated to ensure it remains effective and aligned with best practices.

- **Annual Review:** The strategy will be assessed yearly by the leadership team, with input from students, staff, and parents to identify areas for improvement.
- **Feedback Mechanisms:** We will utilise surveys and feedback channels to gauge the effectiveness of our approach and ensure ongoing improvement.

Commitment to a Bullying-Free Environment:

ROC College is unwavering in its commitment to providing a bullying-free environment. We encourage all students, staff, and parents to actively participate in maintaining a positive, respectful culture where every individual is valued.

Relevant policies and documents:

Behaviour Policy

Children and Young People's Safeguarding Policy

Student Code of Conduct